



Office of the Monroe County Surveyor
Trohn Enright-Randolph

Health Services Building
119 West 7th Street
Bloomington, IN 47404
Phone: (812) 349-2570

Dear User,

The following images were obtained in 2017 by the Office of the Monroe County Surveyor from the State Imaging and Microfilm Laboratory at the Indiana State Archives. The field notes and plats for Lawrence County are stored on microfilm Reel 1903 at the Indiana State Archives. Each page provided by the State Imaging and Microfilm Laboratory is approximately 18MB. Our office combined the pages by Township & Range and reduced the resulting pdfs. This process may have caused some degradation in quality. We will provide unreduced images of specific pages if required. Please contact us at 812-349-2570 or at SurveyorsOffice@co.monroe.in.us to request a higher quality image of any specific page.

The pdfs are bookmarked with the original page numbers as assigned by the State Imaging and Microfilm Laboratory.

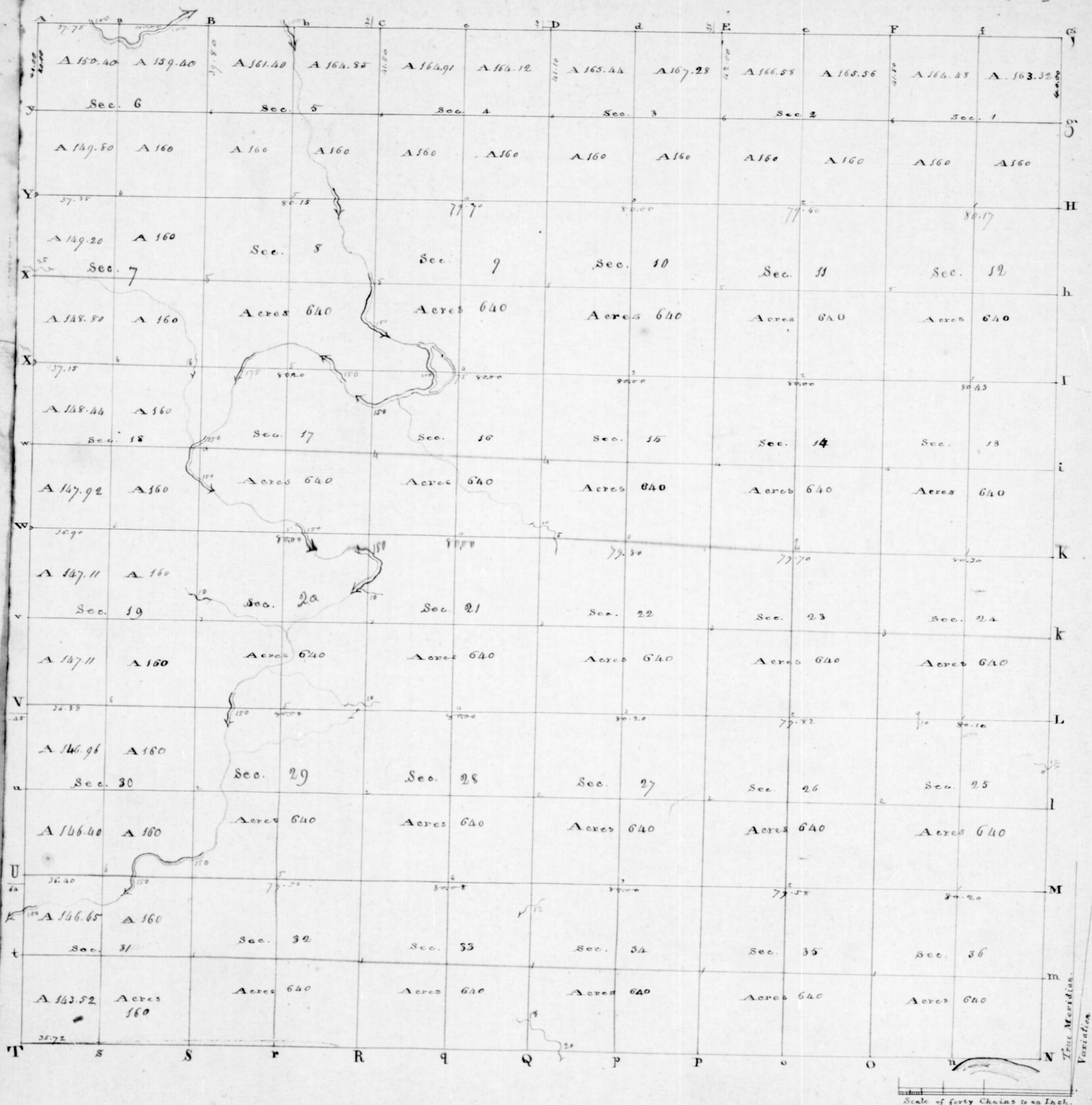
Be prepared to provide the county name, reel number, and the required page numbers when requesting full sized images.

If you would like a DVD of an entire county, please provide us with one DVD per county along with a self-addressed, stamped envelope.

Trohn Enright-Randolph
Monroe County Surveyor

T5N

R2W



Township N° V. North, Range N° II West of 2nd Meridian.

Surveyed by Arthur Henrie 1816.

Description of the Soil on the interior Sectional lines.

Cornhill

N 5 N O 2 W

1	2	3	4	5
6	7	8	9	10
11	12	13	14	15
16	17	18	19	20
21	22	23	24	25
26	27	28	29	30
31	32	33	34	35
36	37	38	39	40
41	42	43	44	45
46	47	48	49	50

Revised

Ap 21 1850

North Between Sec 35 &
36

4000 Bush 10 lbs Deer

corner for years

8000 S. E. corner
of Sec 25-26-35

36 from which

a Dogwood

or 9 1/2 3 links long

= an 10 S 24 1/2 33 lbs

Land Bush & Robin

Lim. Sugar or Poplar

ash

2)

B 211 5500

East

Between 25 3

36 on Random

40,00

Set horn post 1/2
in post

20,20

Inserted 1/2
Shim 12 lbs South
of the corner
and the same

West

Between 25 53 per
true line

40,10

Set horn post
post at average
distance on true
line for the corner
from which a

Dogwood 6 50890

10 lbs Buck 10 870

M 21

20,20

In corner —

North

40,00

20,20

56,00

80,00

3

Between 25 53

25 526 5500 B 211

Set half mile
post from whichon Buck 12 North
28 linksSugar 12 South
13 links —

Hoplars 24 lbs.

Diam.

Set post corner
of 23 24 25 326 from which
a Buck 24 843

M 22 8,10 834 823

and the same

4)

East

25.00

4000

~~50.00~~

80.10

24th 3500

Between an

24825 10th South

Set from

from post

Intersect 10th

line 10th South

of an corner

Land the same

West

40.05

Between 24825

on true line

Set from

post at a 70

Distance on

true line for

from corner

where sugar

10 87988 10th

Post 12 8787

23th

from

80.40

24th 3500

North

Between an 23824

4000

Set from mile

post from which

a Bank 12 8378

14 8710 28 10 11th

80.00

Set from corner

of an 23, 24 139

14 from which

a sugar 10 87127

Bank 10 826 107

Land the same

6.)

R 2 M 55 v 6

East

Between 248

13 on Random

40,00 Set lumber

1/4 in host

80,30 In lumber

1/2 in 12 lbs

South of San corner

and the same

West

Between 13

124 on line

line

40 15 Set lumber

at average dis-

tance on line

line for year

corner from which

a Dogwood 5' 8 1/2 in

30 Dog 1/2 50 8 7

80,30

Set on corner

R 2 M 55 v 2

North

Between 13

13 1/2

8,60

Poplar 40 in

40,00

Set half mile

host from which

a Dogwood

1/5 M 1/4 Bush

12 388 9 links

80,00

Set host corner

of line 11, 12 13 1/4

from which a

Bush 10 822 30

Dogwood 6' 8 1/2 in

26 2 22 lbs land

the same

8.)

P 2 M 1500

Euth

Between 125
13 on Random

40,000

Set temporary host

89,43

Intersected 1845
line 20 hrs north
of App. 1845
The same

West

Between 12513

on line

40 21 1/2

Set temporary host
at averagedistance on line
line for haul

from which

at 20824832 hrs

to Oak 60074 M

17 hrs

in house

80,43

P 2 M 1500

North

Between 11
842

40,000

Set half mile

host from

which a dog

wood 6 1/2 hrs

27 hrs B. Oak

12 812 M 19 hrs

59,75

Sugar 12 hrs

20,000

Set host corner

of 1,2 11 312

from which a

Dogwood 8

350 y Dogwood

6 Dr 50 M 8 hrs

Land hilly

Lign oak
Lign oak

(10)

No 2 M 5.5 m

East

40,00

Between 1812 on
true line
Set temporary
from north

50,17

Intersected by
line 17 lbs north
of the boundary
the same brushy

West

40,00

Between 1812 on
true lineSet temporary
temporary post
at a distanceDistance on
true line for
from where

50,17

North 12 West 24
maple 10387 m 24

(11)

No 2 M 5.5 m

North

40,00

Between 1812

Set half mile
post from where
a Dogwood
60136 25 lbs M Oak
10833 m 20 lbs

81,50

Intersected North
boundary at
the boundary line
the same

(12)

p 2 M 95 V

North Between 34 35

34,75

4000

Bunk 12 lbs

Set half mile

port from which

a sugar 10 22 1/2 M

20 lbs Do 12 lbs

Bunker Beans

832 2 2 1/2

8000

Set host corner

of 34 35 26 527

from which a

wood 6 38 9 10 lbs

Bunk 10 34 5 M

Land Kirk & Koler

Lime poplar ash

Bunker & sugar

in sugar

East

40,00

79,38

p 2 M 95 V (13)

Between 35 36

on Random

Set temporary

host

Intersected 24 9

3 lines 12 lbs

of the corner land

the same

West

39,79

Between 26 35 on

Lime line

Set temporary host

at average of dis

tance on line

line for year

from which a

Bunk 10 34 5 M 48

Do 20 33 9 4 lbs

Lime corner

79,50

14)

No 2 M 55 W

North

Between in 2442

40,00

Set hay mile post
from which a day
ear 12 820 M 6 lbs

Buck 10 443 8 8 lbs

62,40

Sugar 12 lbs. Diarr.

80,00

Set post corner

of in 2 2, 23, 26 1/2

from which a corner

12 868 30 links

80 18 32 24 lbs

Land the same

East

Between 26 823

on Random

40,00

Set line post

79,82

Interested 1890

Line 12 lbs. North

of the corner

Land the same

West

Between in 23 826

55 or 2 1/2

39,91

Set turn post for

at average of dis

= Turn on turn

line for post corner

from which a

Buck 10 838 M

11 links Sugar

88 1/2 M 34 lbs

79,82

In corner

16)

No 2 M 55 Vm

North Between den
22 & 23

12,00 Bush 12 chs Ds

40,00 Set half mile
port from a hut

a gun 20 & 98

33 links bush

12 chs M 15 links

71,35 Sugar 10 chs Ds

80,00 Set port beam

of den 22 23 44 15

from where a Bush

12 chs 6 p. the port

lar 20 south 4

links from the

beam

East

40,00

79,70

West

39,85

79,70

No 2 M 55 Vm

Between den
23 & 4 on RunSet beam
from hutIntersected
12 chs 8 p.North of 4 corner
of the beamBetween den
14 & 23 on trueline
Set beam from
port at averageDen beam or
true line forfrom where a
beamBush 8 chs 2 M 24
Ds 8 p 5 M 25

In corner

(18)

No 2 M 95 cr.

North Between 143
15

29,30 Truck 15 to 1000
 1/2 mile north
 from bridge
 10835 M 19 to 1000
 - for 20 32/15 12 lbs
 and the same

80,000 Set north corner
 of sec 15 14 10 8 11
 from where M 19
 20 33 22 26 to 1000
 3 M 24 23 2 links
 Land very hilly
 & brushy
 Oak & Hickory

Begin

East

40,000

8000

West

40,000

80,000

(19)

No 2 M 95 cr.

Between sec
148 11 on RandonSet corner
Yadon Post
Intersected on

Station 12 the
 South of sec corner
 Lot 3 the same

Between 11 4 1/2
on Iron line

Set corner
 post at average
 distance on true
 line for Yadon
 corner from

Which an Elm
 3 M 23 23 30 lbs

Back 7 8 1/2 M 9 lbs
 in corner

No 2 M 95 V

North Between 10 & 11

4,200 Sit hay mill from which a Wood

20 S 22 M 20 the same

7 S 24 M 27 the same

7,640 Bush 18 feet

8,000 Sit post corner of the 10 S 11 2 48

from which a

Shrub 10 m

50 S 14 M 10 oak

7 S 45 E 13 line

Land Hilly &

Rich Soil

Sugar Bush

ash & poplar

000

East

4,000

79 60

West

39,80

79 60

No 2 M 95 V

Between 11 & 12 on

Random

Sit hemp rope

See post

Interesting

Shrub 12 links, south

of the corner land

the same

Between 28 11 on

Trunk line

Sit hemp rope

post at a stage

Distance on

Trunk line for the

the corner from

which a Bush

10 S 74 M 13

Shrub 12 links

(22)

No 2M 95M

North Butte in Dec 283

4000 Set half mile post
from which a sugar

18829 M 21 lbs 80

12 No 28 14 lbs

43,40 Poplar 30 lbs

Dec 28

82,00 Set post on the
N boundary 25

from east of

In line from
which a sugar

70 33 M 3 lbs

80 88 78 lbs

Land Hill

Tinn Oak
HickoryNorth
116,50
42,00p 3 125
80,00

2M 95M (23)

Butte in 33834

Brook 18 lbs 80

Set half mile

post from

which a sugar

93428 8 Bush

p 3 125 80

Brook 12 lbs 80

Set post corner

of an 3384 27 828

from which a

Hickory 10872

M 12 lbs 80 Oak

30 33 M 29

Land Hill

Tinn Oak

Hickory

24

p 211 500

East. Between 27
4000 27 834 on 1000
Set lamp post
post

80,000 Intersected
1 thin 19 thro
of the corner
Land the same

West Between 27
4000 34 on 1000

Set lamp post
post at a
the same on
the line for
the corner
from which
Bench 8 1/2 58 1/2

8000 12 1/2 58 1/2
ap 8 55 8 10

25

p 211 500

North Between 27 828
4000 Set lamp post
post from which
a corner 12 1/2

49,85 10 8 1/2 1/2
8000 Set lamp post
ap 27 28 21 8 22

from which a
Bench 10 1/2 74 1/2
32 1/2 30 9 38 1/2
Land the same

26

K 2 M 15 M

East Between 27 1/2
22 on Kansan40,00 set temporary base
port80,20 Intersecting
South line 8 M
South of the cornerWest Between 22 1/2
on truck line40,10 set temporary base
at average dis-
tance on truckline for Yuma
corner fromWhitaker Bank
12 or 38 2 32 M
80 9 or 34 8 48 M

80,20 set corner

27

North Between 27 1/2
2240,00 set base
fromWhitaker Bank
12 15 2 32 M

30,00 Sugar 8 or 82 M

35 links
30,00 set point cornerof 21 22 15 16
from which

Sugar 10 or 2 M

18 M 10 or 10 34 8
19 links

Sand hill

Rock Fint

Bank proper

line

25th East Between
22 & 15 on Rand

11,500 000
Shringbrook 5th

40,000 Set lamp house
in post

79,800 Intersecting or
Shin 10 North
of the corner land
the same

West Between 15 & 22
on line line

39,900 Set lamp house
post at average

distance on
line line for
you better
from which

Bank 334289
to 12 or 21 M 15 M
79,800 distance

24th North Between
15 & 22

49,000 000
Shringbrook 10 & 11 M

Set lamp house
post from which

a M 30 & 20 & 55
M 5 M; from 3000
7 11728 by the

Set post corner
of 15 16 10 49

from which
M 30 & 20 825 M 43

links
Send the same

Cost

22 MB 1502

Between 100

North

15 x 10 on Randon

4660

Set tim hay 1/2 m
port

4000

20,000

Set tim hay 1/2 m
12 lbs

North of the
corner of the

British 1/2 m

Must

Between 100

8000

15 on tim hay

40,000

Set tim hay
post at a village
distance on

tim hay for
fencing

in a brush

thickest

30,000

Set tim hay

22 MB 1502

Between 100

Set tim hay
port from

which is 10342

10 links Cherry

tree 1/2 m

Set tim hay
10344 from

which is 10340

10343 1/2 m 10340

10340 1/2 m 10340

10340 1/2 m 10340

10340 1/2 m 10340

10340 1/2 m 10340

10340 1/2 m 10340

R 2115 J 50M

Cost Between 1030 on
Random

40,00 Set half mile post

8000 Invented 2000
line 20 links north
of the corner - Low
the same

West Between 3310 on
line line

40,00 Set temporary post
at a corner dis

same on line
line for your
corner point

which a Bench
20 or 23 M 22th

2000 Invented 2000
Set corner

R 2117 J 50M

South Between 394

4000 Set half mile
post from

which a Bench

10 or 22 24th

11 or 36 11th

Bench 20 or 22th

67,00

81,10

Set post in

their boundary

10th 6 or 2 of a

corner from

which a Bench

20 or 4 M 13th

20 or 36 33th

links

Large the

same

(34)

102M 150M

North

Between 32433

40,00

let hay mile
port from where

a sugar 10 lb

beaver 10 lb

14 lbs poplar 78527

14 lbs

20,00 set post term

of 32433 28

1829 from where

a bush 10 lb

48 lb 8 lbs dog

wood 6 lb 80810

land every day

1 bush 10 lb

1 bush 10 lb

1 bush 10 lb

102M 150M (35)

Court

Between 28433 or

40,00

28433 on land

80,08

set term hay 10

in port

Intersections

1 lb 12 lbs

10 lbs 12 lbs

10 lbs 12 lbs

10 lbs 12 lbs

10 lbs 12 lbs

West

Between 28433 or

40,04

10 lbs 12 lbs

set term hay 10

at average dis-

tance or term

10 lbs 12 lbs

10 lbs 12 lbs

10 lbs 12 lbs

10 lbs 12 lbs

80,08

10 lbs 12 lbs

wood 6 lb 80810

(34)

No 2 M T 5 V

North
40,00

Between In 32433

Set hay mill
 port from where
 a sugar 10 lbs
 Beans & Beans 3 1/2
 14 lbs Poplar 7 1/2 2 1/2
 14 lbs

20,00 Set post corner
 of In 32433 28
 18 29 from where
 a Bush 10 or
 48 10 8 lbs Dog
 wood 6 or 80 & 10

Land carry hill
 & brushy line
 Oak & Hickory

No 2 M T 5 V (35)

East

Between In 28833 on
 40,00 Set hay mill
 In port
 80,08 Intersession
 8 line 12 lbs
 South of In
 corner
 Hilly & brushy

West

Between 28833 on
 40,04 line line
 Set hay mill port
 at average dis-
 tance on line
 line for In
 corner from
 which sugar
 10 88 10 12 dog
 20,08 wood 6 or 80 & 10 32

(36)

No 2 M 55 V

North Between 28 & 29

40,000 Set half mile
North from which
and on wood

50 x 70 x 9 lbs

19 x 15 x 22 lbs

22 lbs —

20,000 Set North corner

of the 28, 29 20421

from which a dug

and 8 x 10 m 19 lbs

Dug 18 part 15

links and the

Same

No 2 M 55 V (37)

Cwt Between 28 & 29 on Randor

40,000 Set temporary host

8,000 Intersected with

line 48 lbs North

of the corner and

the same

West Between 21 & 28

on true line

140,000 Set temporary host

of average dis

tance on true

line for Juan

corner from

where a bush

7 x 4 x 2 22 sugar

50 x 76 m 11

Set corner

Re 210150

North Between in 20821
 350 Brook 10th Mar
 4900 dit hwy mile post
 from where. Br
 8222 M 14th Dec 18
 or 29 M 23 line
 51,50 Brook 10th Mar
 6900 Brook 15th Mar
 35,00 To where the same
 comes from the N.M.
 80,00 dit hwy coming
 in 2021, 16 & 17 from
 which a 8232 12th
 Brook 12th 29247
 lands the
 same

East

4200

80,00

West

4000

80,00

Re 210150

Between in 21
 416 on Random
 dit hwy post
 host
 Intersected or 8
 I line 18th Dec
 of the corner
 Land the same

Between 16821
 on two line
 dit hwy post
 at average
 distance on the
 line for 1/2 an
 corner from
 which a began
 9 1/2 1/2 2 1/2 80 7 1/2 18
 20 corner

3240

R2M J5V

North Between 16817
 2360 Bush 10 No Beans
 4000 Set hay mile post
 from which a
 long road to S154
 15 links Dogwood

to S158 23 links

6000 Brook 1.50 the M.
 48000 Set post corner of
 an 1617 889 from
 which a bush
 \$34820 M 80 12
 or 34 M 3 links
 land the same

East

30,00

34,00

40,00

80,00

West

40,00

20,00

R2M J5V 34

Between 1689

on Randorn

Brook 100th 8th

to corner part of the
same 75th 1st

Set then hooked post
 between 1689 & 8th line
 15th the South of the corner
 land the same

Between 9816

on true line

Set then hay post

at average dis-

tance on true

line for use

corner from

which a sugar

9849 21 to 30

347 M 16. to 18th

Set corner

(342)

p 2M 95 v

North Between 889

2500 Brook 150 lb

Course Down

S.E. Course up

4000 North
in the Brook4500 same comes from
the N.M.

8000 set port Carver

of sugar 445 for

which Sugar is

34821 Truck &

449 24 lb

(43)

p 2M 95 v

East Between 889
on Randam4000 Set Limbony hay
mile post and kick7970 Intersected with
line 18th North
of the Carver

East hay mile kinder

West Between 889

on true line

3920 Set Limbony
port at average
distance on true
line for 1000 Carver

from which a

Sugar 8. 1847 N 30

Sugar none

7970 18 v 30 23

(342)

P 2M 1500

North Between 889

2500 Brook 1500

Course Down

S.E. course up

4000 North
in the Brook4500 Some comes from
the W.M.

8000 Set first corner

of Sec 8 9 44 5 for

which Sugar 12

34821 Peak 6

449 24 1/2

(43)

P 2M 1500

East Between 889

on Randam

4000 Set temporary

mile post and high

7970 Intersected W & S

line 18th north

of the corner

East half mile thence

West Between 489

on line line

3980 Set corner

Post at average

distance on line

line for 1/2 corner

from which a

Sugar 8. 1/2 1/2 1/2 30

Sugar none

7970 1500 50 23

144

Be 2 M 95 M

North

Between Dr
584

4000

Set half mile
post from

which is from

to 1981580

9 or 20 M 17 M

21,500

Set post on
the North
boundary 30

links east of

Barlow

from which

the mark is 25

M 2 lbs 30 20

or 32 M 8 lbs

Land the

same

Be 2 M 95 M (45)

North

Between Dr 313
3295 or 2 M

4000

Set half mile

post

8000

Set post corner
of Dr 29 30 313

32 from which

Dr 10 or 57 24

mark to 517 M 18

links Land Broker

& brushy trees

oak & Hickory

& Birch

46

B21095M

East Portuensis 3292 2
on Mar. 2

4000 Sublimation
In host

79,50 Intersected on
 & line 12 lbs
 north of An
 Canyon Turn
 The same

West Betts in 29432

39.75 Sublimation
port et archa
ge distancie
entre les p
Yves lemming
colida Bush 12

7960 West 34 Wicks
Sun Comm

Between Dec 30 (47)
Jan 31 95 - 2 PM

22,50 Brook 950 lbs

40,000 Lbs hay

Post from where
a Bur 10 N 51 E

14 Mrs Ironwood
4 Apr 80 17 25 Mrs

76,40 Set post on the
west boundary
64 hrs north of

In corner from
Whitka Brook
10 85488 Moak
10 41548 Moak

Land broken
Linn. Birch
Rohlon Aug 18

(50)

North R 2 M 55 or
 Between 19120
 16,500 Bush 2000
 4000 Set half mile
 north from where
 in Bush 10 or
 45 M 16 lbs 30
 Do South 13 lbs
 57,000 Bush 10 lbs 4
 80,000 Set past corner
 of the land 17 18 19
 420 from where
 on Bush 12 18 19
 6 22 30 6 39 13
 Land the same

(51)

R 2 M 55 or

East Between 17
 4000 20 on Railroad
 Set from highway
 past
 45000 Bush 150 lbs
 South
 8000 Inherited from
 in 26th block of
 the corner of the
 street
 West Between 17
 2000 from line
 4000 Set from highway
 at average
 Do same on
 this line for
 1/2 an acre
 from where
 Bush 20 or 73 M
 12 to 18 or 79 13
 58000 Set from

R. 2 M 35 W.

North Between A
17 & 18

25,00 Brook 150 M

40,00 Set half mile

post from
whuk a sugar

10 or 31 & 20 Bush

8 or 51 M 3 M

44,50 same West

80,00 Set host here
of A 17, 18 & 18

from whuk a M

Oak 12 or 25 M 32

Bush 10 or 59 & 18

Land the same

R. 2 M 35 W.

East Between A 17 & 18

on Random

19,00 Brook 175 M 3 M

20,00 Set temporary from post

55,00 Brook 150 M 3 M

20,20 Intentional & line

30 lines North of the

corner Land the

same

West Between A 17 & 18 on

true line

40,10 Set from house from

post at average

distance on true

line for from

corner from which

a poplar 7 or 8 48 13

Bush 29 or 37 & 13 36

20,20 same corner

2M 55M

North Between dm 758
 13,50 Sugar 10 dm 8
 40,00 Set hay mile
 post from which
 a poplar 6 3/4
 25 lbs Buck 12
 32 9M 29 links
 80,00 Set post corner
 of dm 5 6 7 8
 from which a
 Maple 8 or 10 M
 23 Buck 10 5 2 M
 20 links band
 the same

East

2M 55M (55)

Between 588 on
 Random
 400 Set ten hay post
 6400 Buck 150 South
 80,15 Interspersed 8 South
 line 20 links North
 of a corner band
 the same

West Between dm 5 7 8
 on true line
 40,07 Set ten hay post
 at average dist
 corner on true
 line for true
 corner from
 which a iron
 wood 6 8 4 1 3
 Buck 5 8 2 7 M 18
 80,10 Set corner

(54)

R 2 M 55 N

North
 13,50
 40,00
 Between dm 758
 Sugar 10 dm 8
 Set hay miles
 Post from which
 a poplar 6 3/4
 25 lbs Buck 212
 329 M 29 links
 80,00 Set post corner
 of dm 567 1/2
 from which was
 Maple 8 or 10 M
 23 Buck 1052 M
 20 links band
 The same

East

R 2 M 55 N (55)

Between 588 on
 Random
 4,00 Set ten hay 1/2 a post
 64,00 Buck 150 South
 80,15 Intended 1/2 South
 line 20 links North
 of a corner band
 The same

West Between dm 548
 on true line
 40,07 Set ten hay post
 at average dist.
 corner on true
 line for true
 corner from
 which a random
 wood 6841 3/4
 Buck 5827 M 12
 80,15 Set corner

54

No 2 M 55 M

North Between dm 758
13,50 Sugar 100ms d
40,00 Set hay mile

post from which
a poplar 6 3/4
25 M 29 link
32 9 M 29 link

80,00 Set post corner
of dm 567 & 8
from which a
Maple 80 M 10 M
23 Bank 1052 M
20 links band
The same

East

No 2 M 55 M (55)

400

Between 588 on
Random

6400

Set ten hay 400 post

80,15

North 150 South

Intersected 1/4 South
line 20 links North
of a corner band
The same

West

Between dm 578

or true high

40,07

Set ten hay post

at a right dist

tance on true

line for use

corner from

which a iron

wood 6541 & 3

Bank 65427 M 18

20,10

Set corner

(58)

No 2 M 5500

North Between the

4000 586 Set half mile

North from
whichever
wood 4 or 412

17 lbs sugar 10

or 88 M 14 lbs

7980 Section corner

on the North
Boundary

Land Kirk

of Roby

Iron poplar

Sugar

Buck

Met

4000

7680

No 2 M 5500 (59)

Between 19430

Set half mile

North from which

a Buck 108548

16 Do 9 or 47 M 514

Set North on the

West boundary 45

links North of

corner from which

a Buck 105179

223 lbs Do 73522

17 lbs Land the

same

(58)

R 2 M 55 v

Must

Between
6874000 Set half mile
from housewhich a bag
band 6 10 42

36 lbs brush 20

349 M 15 H

77,35- To the corner
on the west
boundary

Land Hill

Firm oak

Hickory

R 2 M 55 v (59)

Must

Between
7878

4,50 Brook 10 M South

14,60 Belgen 12 M 18

4,200 Set half mile from

house which a

brush 10 22 19 1/2

Oak 12 10 83 M 2

77,15- To the corner

on the west bound

ary land hill

Firm oak

Hickory

(58)

R 2 M 55 v

Mist

Between

687

4000 Set half mile

port from

where a bag

found 650048

36 lbs Bush 20

849 M 15 ft

77135 - 1000000

on the west

boundary

Land Hill

Dinner oak

Hickory

(59)

R 2 M 55 v

Mist

Between

7878

4150 Brook 10 M 1000

14600 Blum 12 M 1000

4200 Set half mile port

from where

Bush 10 S 28 19k

Oak 12 S 83 M 2

77115 - 1000000

on the West bound

ary Land Hill

Dinner oak

Hickory

60)

At 2 PM 1500

Met Between 184/9

4000 Set post for the
corner from
where Sugar 12
North 2 links

7690 Section corner
on the west
boundary

Land Riley

From Bench
Sugar ash & poplar

2001051/0110

175

4.5

1886